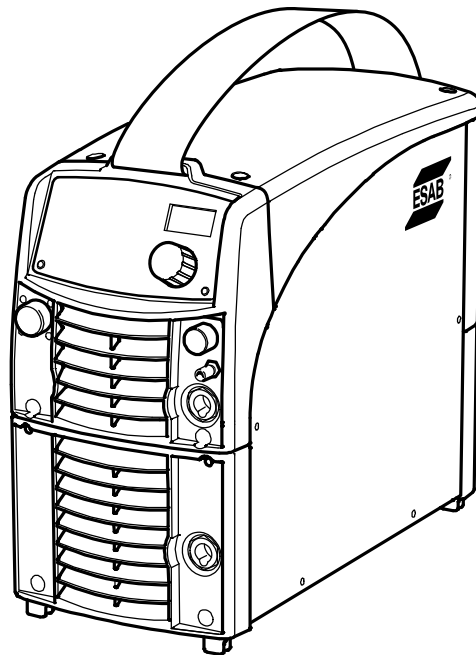


Spare parts list

Edition 20110720



AH 0634

Valid for serial no. 718-xxx-xxxx,828-xxx-xxxx,843-xxx-xxxx

Ordering no. Product

| | |
|--------------|---|
| 0460 150 880 | Caddy® Tig 2200i AC/DC, TA34 AC/DC |
| 0460 150 480 | Caddy® Tig 2200i AC/DC, TA34 AC/DC, US version |
| 0460 150 881 | Caddy® Tig 2200i AC/DC, TA33 AC/DC |
| 0460 150 481 | Caddy® Tig 2200i AC/DC, TA33 AC/DC, US version |
| 0460 150 882 | Caddy® Tig 2200i AC/DC, TA33 AC/DC with MMA-kit and TXH 200 |
| 0460 150 482 | Caddy® Tig 2200i AC/DC, TA33 AC/DC with MMA-kit and TXH 200, US version |
| 0460 150 883 | Caddy® Tig 2200i AC/DC, TA34 AC/DC with MMA-kit and TXH 200 |
| 0460 150 483 | Caddy® Tig 2200i AC/DC, TA34 AC/DC with MMA-kit and TXH 200, US version |
| 0460 150 484 | Caddy® Tig 2200i AC/DC, TA34 AC/DC with MMA-kit and TXH 250, Water cooler CoolMini, 2-wheel trolley, US version |
| 0460 150 885 | Caddy® Tig 2200i AC/DC, TA33 AC/DC with MMA-kit and TXH 200 Australian version |
| 0460 150 886 | Caddy® Tig 2200i AC/DC, TA34 AC/DC with MMA-kit and TXH 200 Australian version |

Spare parts are to be ordered through the nearest ESAB agency. Kindly indicate type of unit, serial number, denominations and ordering numbers according to the spare parts list.

Maintenance and repair work should be performed by an experienced person, and electrical work only by a trained electrician. Use only recommended spare parts.

Rights reserved to alter specifications without notice.

Tig 2200i AC/DC

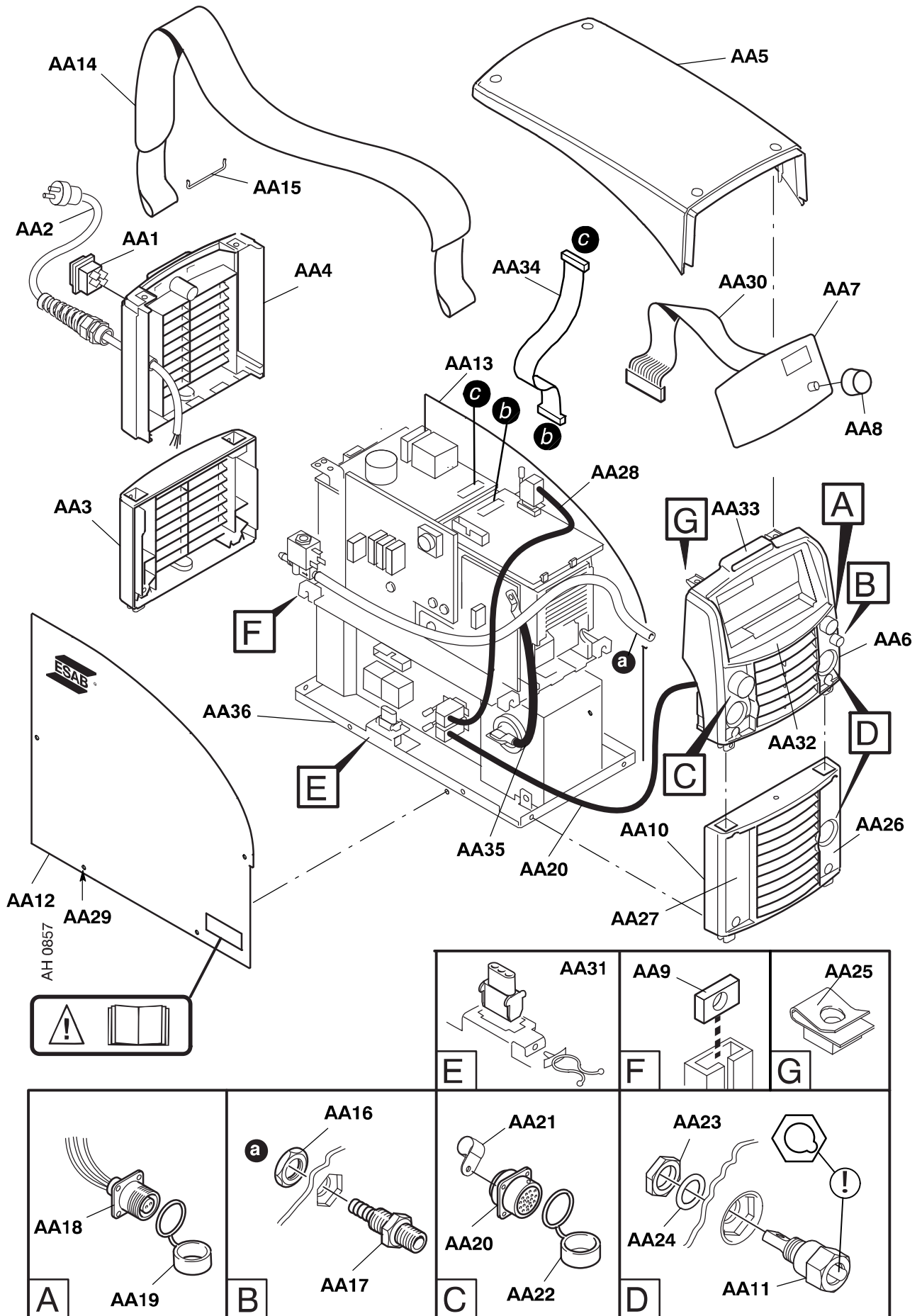
C = component designation in the circuit diagram

| Item | Qty | Ordering no. | Denomination | Notes | C |
|------|-----|--------------|------------------------------|--|------------|
| AA1 | 1 | 0193 317 001 | Switch | Included in item AA50 | 2QF1 |
| AA2 | 1 | | Cord set | Included in item AA50 | |
| AA3 | 1 | 0460 139 001 | Rear panel AC | | |
| AA4 | 1 | 0460 140 001 | Rear panel | | |
| AA5 | 1 | 0460 143 001 | Cover | | |
| AA6 | 1 | | Front panel | Included in item AA51 | |
| AA7 | 1 | 0460 250 880 | MMC Module TA34 AC/DC | Control panel complete. Includes items AA8 and AA30 | |
| | 1 | 0460 250 881 | MMC Module TA33 AC/DC | Control panel complete. Includes items AA8 and AA30 | |
| AA8 | 1 | 0460 600 528 | Knob grey | | |
| AA9 | 5 | 0366 588 001 | Nut | | |
| AA10 | 1 | 0460 141 001 | Front AC | Front panel | |
| AA11 | 3 | 0160 362 025 | Connector OKC 50 | Included in item AA51 | XS1, XS2 |
| AA12 | 1 | 0460 155 001 | Side panel | left | |
| AA13 | 1 | 0460 155 002 | Side panel | right | |
| AA14 | 1 | 0460 265 001 | Strap | | |
| AA15 | 2 | 0468 497 001 | Holder | | |
| AA16 | 1 | | Nut | Included in item AA51, M8 | |
| AA17 | 1 | 0459 269 002 | Gas connection | Included in item AA51 | |
| AA18 | 1 | | Socket | 2 pole included in item AA52 | 29XS4 |
| AA19 | 1 | 0457 626 001 | Protection cap | | |
| AA20 | 1 | 0458 681 897 | Cable with connectors | | XS25, XP5 |
| AA21 | 1 | 0194 227 003 | Clamp | | |
| AA22 | 1 | 0366 285 001 | Protection cap | | |
| AA23 | 2 | 0366 247 001 | Nut | | |
| AA24 | 2 | 0366 306 003 | Spring washer | Ø21/15x1 | |
| AA25 | 6 | 0469 381 002 | Fast lock nut | M5 | |
| AA26 | 1 | 0460 230 002 | Sticker | | |
| AA27 | 1 | 0460 230 001 | Sticker | | |
| AA28 | 1 | 0458 681 898 | Cable | Included connectors 20XP1, 20XP3 and ferrite rings 20L1 and 20L3 | <----- |
| AA29 | | 0194 179 327 | Screw MRT | ground cutter, M5x12 | |
| AA30 | 1 | 0193 700 711 | Ribbon cable with connectors | 34 pole | 1XS1, 1XS2 |
| AA31 | 1 | 0193 700 713 | Ribbon cable with connectors | 10 pole | 5XS1, 5XS2 |
| AA32 | 1 | | Sticker | Tig 2200i AC/DC | |
| AA33 | 1 | | Sticker | ESAB | |
| AA34 | 1 | 0193 700 702 | Ribbon cable | | |
| AA35 | 1 | | Cable set | See item AD12 on page 8 | |
| AA36 | 1 | 0460 154 001 | Bottom plate | | |

SPARE PARTS SETS

| Item | Ordering no. | Denomination | Notes |
|------|--------------|----------------|--|
| AA50 | 0459 183 880 | Mains module | Includes items: AA1 switch, AA2 mains cable with plug, cable clamp and two ferrite rings 2L1. |
| AA50 | 0459 183 882 | Mains module | Includes items: AA1 switch, AA2 mains cable with plug, cable clamp and two ferrite rings 2L1. - Australian version |
| AA51 | 0460 379 880 | Front complete | Includes items: AA6, AA11, AA16, AA17, AA18, AA19, AA20, AA21, AA22, AA23, AA24 |
| AA52 | 0459 280 892 | Cable set | Including item AA18, 2 pole socket 29XS4, 5 pole socket 29XS6, and the wires between them. |

Tig 2200i AC/DC



Tig 2200i AC/DC

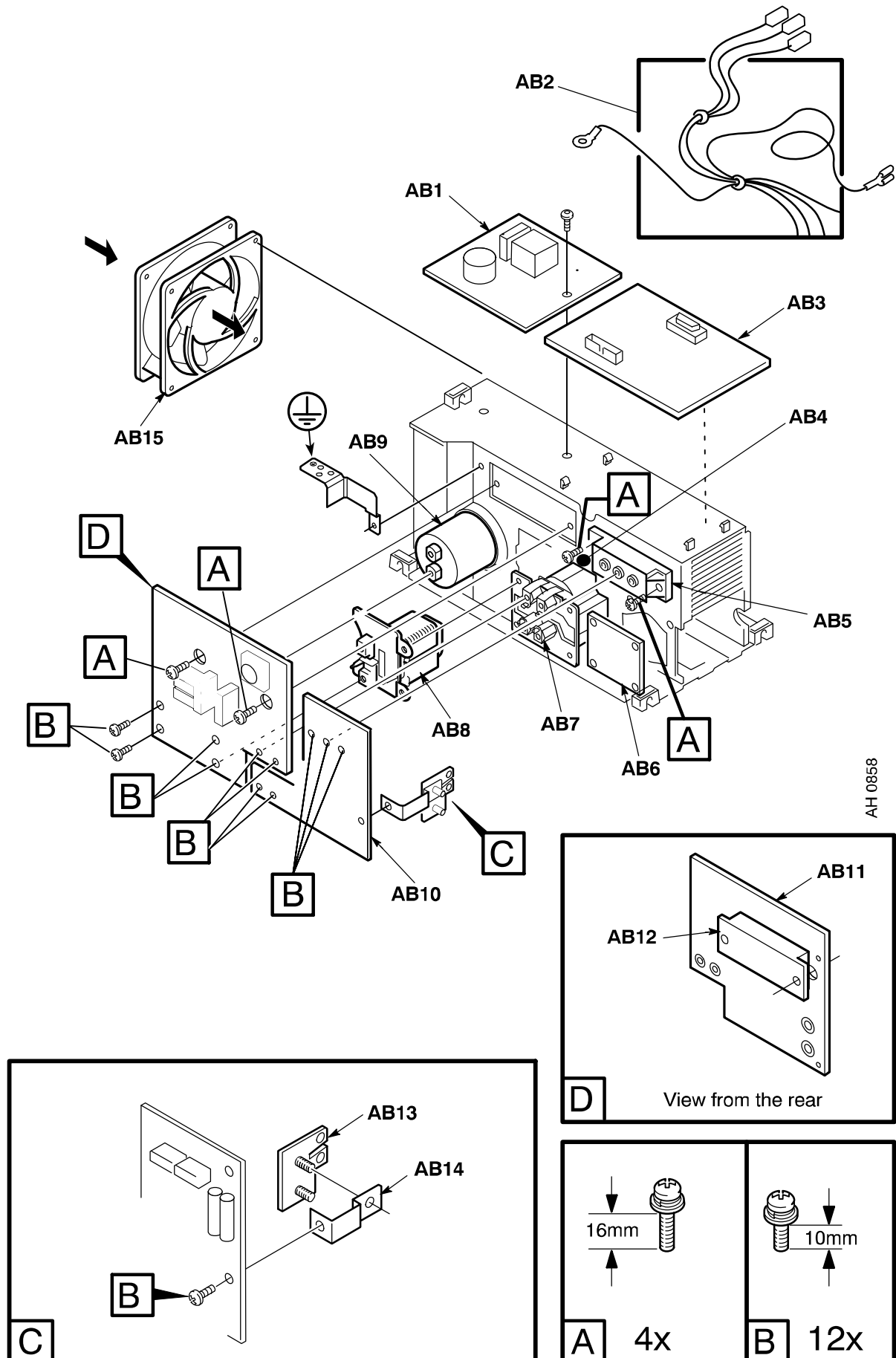
C = component designation in the circuit diagram

| Item | Qty | Ordering no. | Denomination | Notes | C |
|------|-----|--------------|------------------------------|--|--------------|
| AB1 | 1 | 0487 631 880 | Power supply board | Replaces 0487 064 884 | 2AP1 |
| AB2 | 1 | 0193 700 702 | Ribbon cable with connectors | 10 pole | 20XS3, 20XS4 |
| AB3 | 1 | 0487 344 886 | Control board | Configured for Tig 2200i AC/DC TA33 | 20AP1 |
| | 1 | 0487 344 888 | Control board | Configured for Tig 2200i AC/DC TA34 | 20AP1 |
| AB4 | 1 | 0468 940 005 | Thermal switch | Socket connector 15XS5 included | 15ST2 |
| AB5 | 1 | | Diode module | See item AB50 | 15D1 |
| AB6 | 1 | | Cover plate | | |
| AB7 | 1 | 0459 355 881 | Transformer | Includes: main transformer, socket 15XS4, socket 15XS6, thermal switch 15ST1 | 15TM1 |
| AB8 | 1 | 0460 117 001 | Inductor | PFC | 15L2 |
| AB9 | 1 | 0194 158 004 | Capacitor | 2200 uF 450 V DC | 15C1 |
| AB10 | | 0487 303 880 | Secondary board | | 15AP2 |
| AB11 | 1 | | Circuit board | See item AB51 | 15AP1 |
| AB12 | 1 | | Semiconductor module | See item AB51 | |
| AB13 | 1 | 0468 030 880 | Shunt | | 15RS1 |
| AB14 | 1 | 0459 194 001 | Busbar | | |
| AB15 | 1 | 0458 065 002 | Fan | 24 V DC; With cables and socket 15XS3 | 15EV1 |

SPARE PARTS SETS

| Item | Qty | Ordering no. | Denomination | Notes |
|------|-----|--------------|------------------|--|
| AB50 | 1 | 0459 385 881 | Diode module kit | Includes: item AB5 diode module, screws (type A and B), thermal compound and roller. |
| AB51 | 1 | 0459 384 884 | Power board kit | Includes: item AB11 power board, item AB12 semiconductor module, screws (type A and B), thermal compound and roller. |
| - | | 0458 910 002 | Roller handle | For the roller in the spare parts sets above |
| - | | 0192 058 101 | Thermal compound | |

Tig 2200i AC/DC

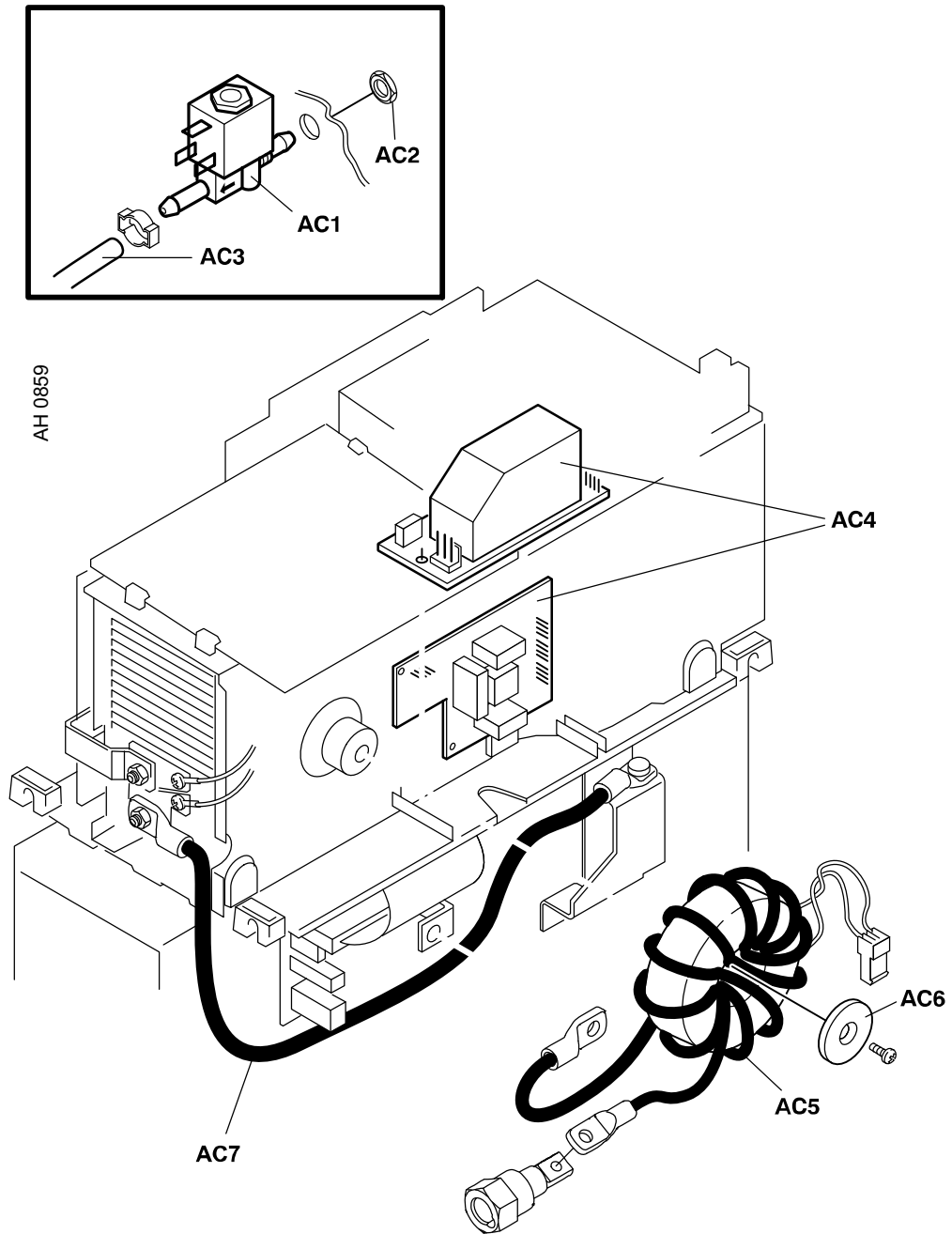


Tig 2200i AC/DC

C = component designation in the circuit diagram

| Item | Qty | Ordering no. | Denomination | Notes | C |
|------|-----|--------------|-------------------|---|--------------|
| AC1 | 1 | 0193 054 005 | Solenoid valve | 230 V AC | 10YV1 |
| AC2 | 1 | | Nut | ML6M MF10x1 | |
| AC3 | 1 | 0456 496 001 | Hose | D = 9/5 mm, L = 0.57 metre reinforced PVC | |
| AC4 | 1 | 0487 028 880 | Circuit board TIG | | 10AP1 |
| AC5 | 1 | 0460 135 002 | HF coil | | 10TV1, 10XS1 |
| AC6 | 1 | 0459 258 001 | Coil bracket | | |
| AC7 | 1 | | Cable set | See item AD12 on page 8 | |

Tig 2200i AC/DC



Tig 2200i AC/DC

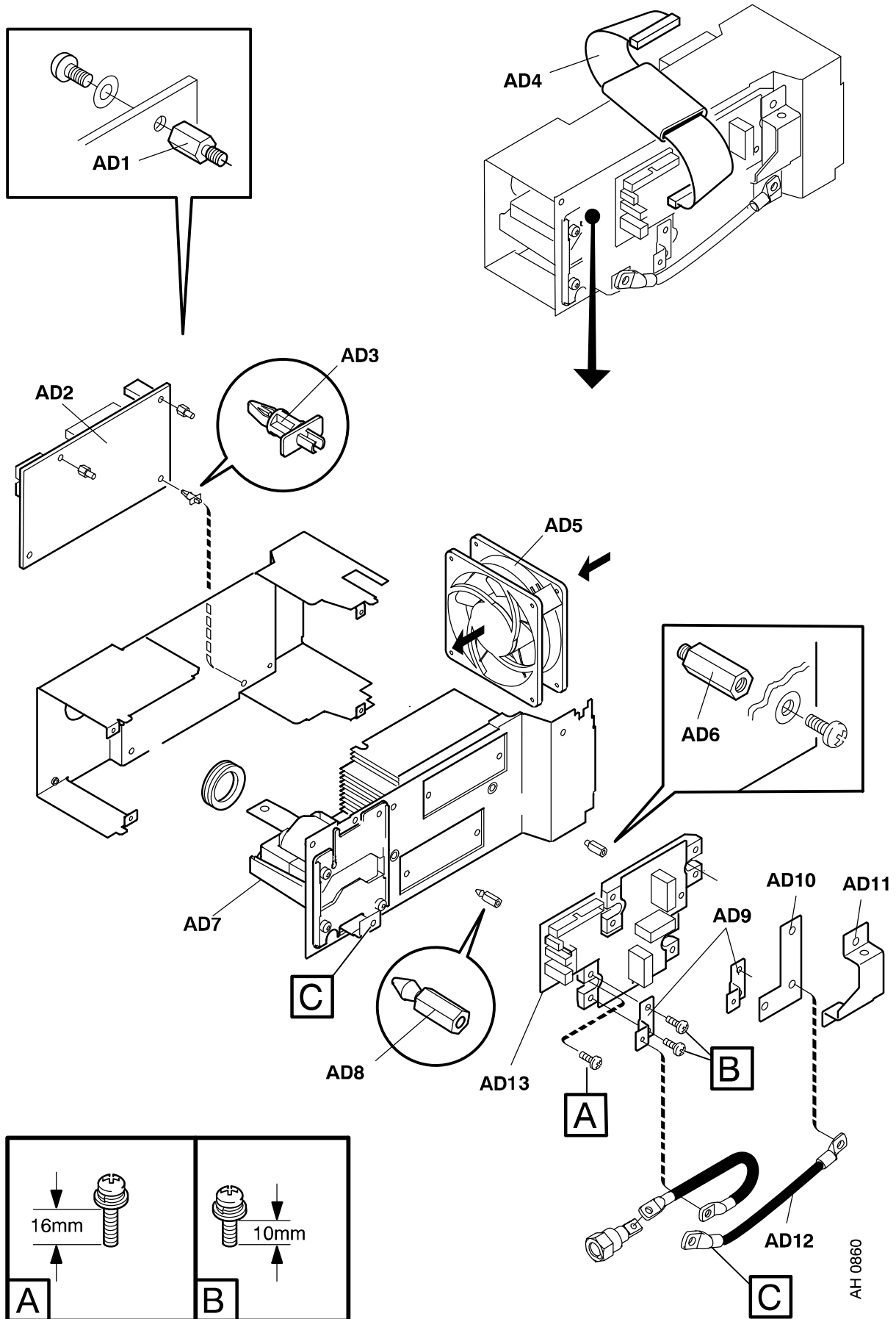
C = component designation in the circuit diagram

| Item | Qty | Ordering no. | Denomination | Notes | C |
|------|-----|--------------|------------------------------|-----------------------------|-------------------|
| AD1 | 2 | | Spacer | M5x8 | |
| AD2 | 1 | 0487 503 880 | AC Control board | | 18AP1 |
| AD3 | 2 | | Spacer | 28.6 mm | |
| AD4 | 1 | 0193 700 712 | Ribbon cable with connectors | 40 pole | 18XS2, 18XS3 |
| AD5 | 1 | 0467 801 002 | Fan | 24VDC socket 18XS4 included | 18EV1 |
| AD6 | 2 | | Spacer | M5x20 | |
| AD7 | 1 | 0459 751 882 | Inductor | | 15L1 |
| AD8 | 2 | | Spacer | TCBS-10R | |
| AD9 | 2 | 0460 112 001 | Bar | HF | |
| AD10 | 1 | 0460 114 001 | Bar | plus | |
| AD11 | 1 | 0460 113 001 | Bar | minus | |
| AD12 | 1 | 0460 152 980 | Cable set | coarse | K9, K10, K11, K12 |
| AD13 | 1 | | AC Power board | See item AD50 | 18AP2 |

SPARE PARTS SETS






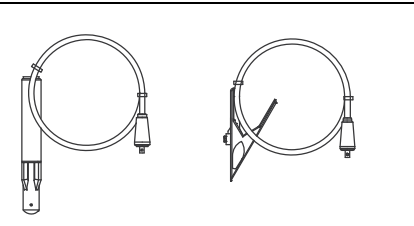
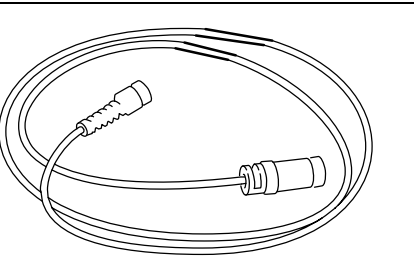
| Item | Qty | Ordering no. | Denomination | Notes |
|------|-----|--------------|--------------------|--|
| AD50 | 1 | 0459 384 885 | AC Power board set | incl. AC power board AD13, semi conductor module, screws (type A and B) thermal compound and roller. |

Tig 2200i AC/DC

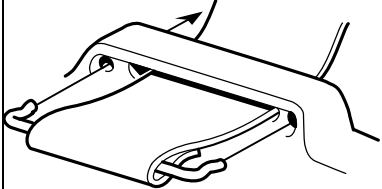
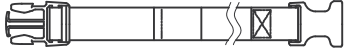

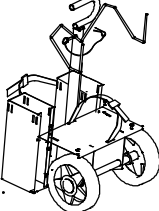

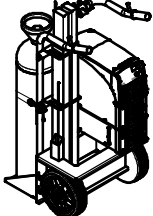
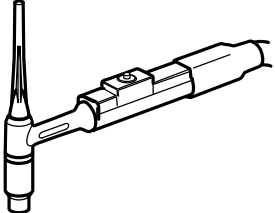


Tig 2200i AC/DC


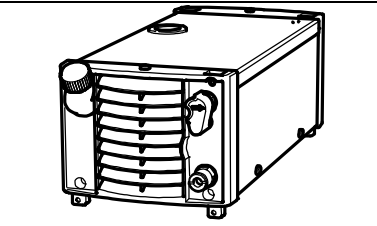
Accessories

| | | | | | | | | | | | |
|---|---|---------------|--------------|----------------|--------------|----------------|--------------|----------------|--------------|------------------|--------------|
|  | <p>Remote control adapter RA12 12 pole 0459 491 910 For analogue remote controls to CAN based equipment.</p> | | | | | | | | | | |
|  | <p>Remote control unit MTA1 CAN 0459 491 880 MIG/MAG: wire feed speed and voltage MMA: current and arc force TIG: current, pulse and background current</p> | | | | | | | | | | |
|  | <p>Remote control unit M1 10Prog CAN 0459 491 882 Choice of on of 10 programs MIG/MAG: voltage deviation TIG and MMA: current deviation</p> | | | | | | | | | | |
|  | <p>Remote control unit AT1 CAN 0459 491 883 MMA and TIG: current</p> | | | | | | | | | | |
|  | <p>Remote control unit AT1 CF CAN 0459 491 884 MMA and TIG: rough and fine setting of current.</p> | | | | | | | | | | |
|  | <p>Welding cable kit 0700 006 884 Return cable kit 0700 006 885</p> | | | | | | | | | | |
|  | <p>Remote cable CAN 4 pole - 12 pole</p> <table border="0"> <tr> <td>5 m</td> <td>0459 544 880</td> </tr> <tr> <td>10 m</td> <td>0459 554 881</td> </tr> <tr> <td>15 m</td> <td>0459 554 882</td> </tr> <tr> <td>25 m</td> <td>0459 554 883</td> </tr> <tr> <td>0.25 m</td> <td>0459 554 884</td> </tr> </table> | 5 m | 0459 544 880 | 10 m | 0459 554 881 | 15 m | 0459 554 882 | 25 m | 0459 554 883 | 0.25 m | 0459 554 884 |
| 5 m | 0459 544 880 | | | | | | | | | | |
| 10 m | 0459 554 881 | | | | | | | | | | |
| 15 m | 0459 554 882 | | | | | | | | | | |
| 25 m | 0459 554 883 | | | | | | | | | | |
| 0.25 m | 0459 554 884 | | | | | | | | | | |

Tig 2200i AC/DC

| | |
|---|--|
|  | <p>Strap 0460 265 001</p> |
|  | <p>Cable holder 0460 265 002</p> |
|  | <p>Shoulder holder 0460 265 003</p> |
|  | <p>Trolley for 5-10 litre gasbottle 0459 366 885</p> |
|  | <p>Trolley for 20-50 litre gasbottle 0459 366 887</p> |
|  | <p>Trolley for 20-50 litre gasbottle 0460 330 880</p> |
|  | <p>Tig torch TXH 200 4 m 0460 012 840</p> |

Tig 2200i AC/DC

| | |
|--|--|
|  A black foot pedal with a coiled black cable and a connector. | Foot pedal TI Foot CAN 0460 315 880 |
|  A black rectangular cooling unit with a front grille and a handle. | Cooling unit CoolMini 0460 144 880 |

AH 0836

NOTES

A series of horizontal dotted lines for writing notes.

NOTES

A series of horizontal dotted lines for writing notes.

